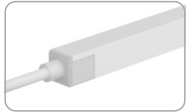
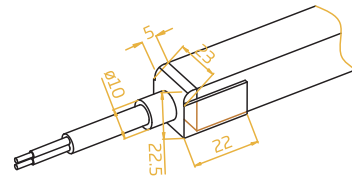


### Silicone Injection-moulded Front Connector-End



FXN – 2219 – C – SIM – FE

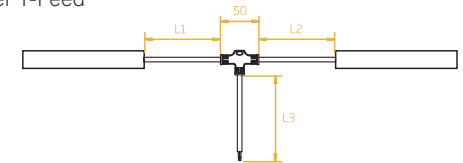


### Silicone Injection-moulded Middle Connector & Power T-Feed



FXN – 2219 – C – SIM – TF

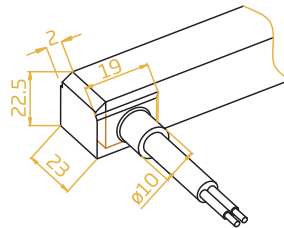
L1 and L2 available in 300mm.  
L3 available in 300mm/1000mm/3000mm.



### Silicone Injection-moulded Front Connector-Side

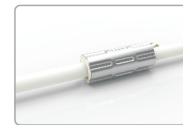


FXN – 2219 – C – SIM – FS



- Note:
1. Unless otherwise stated, the tolerance of the connector is  $\pm 0.5\text{mm}$ .
  2. To avoid damage from excessive force on cable joint, please keep at least 60mm of cable ahead in the natural state.

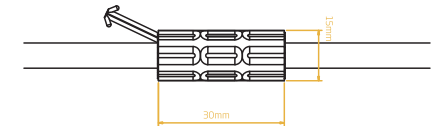
### Anti-wicking Ferrule



The anti-wicking ferrule is located at 115mm ( $\pm 10\text{mm}$  tolerance) from the connector on the cable.

For protection against water ingress from inside of cable wire and hence damage the light.

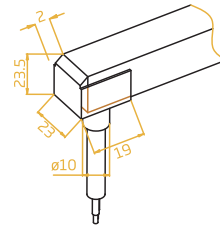
- Note:
1. Unless otherwise stated, the tolerance is  $\pm 0.5\text{mm}$ .
  2. The removal of anti-wicking ferrule will void the warranty if any water ingress caused by it.



### Silicone Injection-moulded Front Connector -Bottom



FXN – 2219 – C – SIM – FB



### Silicone Injection-moulded End Cap



FXN – 2219 – C – SIM – EC

